





CCI EUROPE | CCI ASIA

... your dependable supplier for electronic products worldwide.

COMPANIES

CCI EUROPE GmbH
Bad Meinberger Straße 1
32760 Detmold
Germany

CCI China (CCI Asia)
SuZhou Limited
Room 610, C-Tower Building
Ascendas i-hub Technology Park
SIP SuZhou 215028
China

PROFILE

- Distribution of electronic components, critical & hard to find
- Logistic support and VMI programs

FOUNDED

2001 - CCI Europe
2012 - CCI Asia

OUR TEAM

11 Employees CCI Europe
15 Employees CCI Asia

COMPANY DIRECTORS

Rainer Wagenschieber (CCI Europe)
Torsten Schwanbeck (CCI Asia)
William Xi (CCI SuZhou)

LOCATIONS

Detmold (Germany)
Boston (USA)
SuZhou (China)
Hong Kong (China)

WE ARE HERE FOR YOU

... worldwide - around the clock!





YOUR REQUEST - OUR MISSION

Quality starts with good suppliers.

- ✓ Approved vendor program - reevaluated every year.
- ✓ Partnerships and expertise with key suppliers for more than 20 years.
- ✓ We are in contact with all leading distributors - worldwide.
- ✓ Over the years business relationships with vendor becoming partnerships for life.



YOUR REQUEST - OUR MISSION

responsible - honest - dependable

- ✓ We work your requirements - immediately and complete!
- ✓ We inform you of the status in a timely manner.
- ✓ No sales pitch! We speak open with you - even unpleasant news.
- ✓ We say what we do and we do what we say.
- ✓ Our approach ist proactive and not reactive.
- ✓ Quality has highest priority - you are invited to audit us.
- ✓ Our prices are honest and fair!
- ✓ We deliver dependable and if necessary in person.

A WORLD OF INFORMATION AT YOUR FINGERTIPS



Certificate of Membership

This is to certify that
CCI Europe GmbH

Is a Member of ERAI, Inc.
Certificate #867929389-0417

Apr. 14, 2017

Date

Mar. 5, 2015

Member Since

Mar. 5, 2018

Valid Until

CERTIFICADO
CERTIFIKAT
CERTIFICATE

ZERTIFIKAT

Die Zertifizierungsstelle
der TÜV SÜD Management Service GmbH
bescheinigt, dass das Unternehmen



CCI Europe GmbH
Bad Meinberger Str. 1
32760 Detmold
Deutschland

für den Geltungsbereich

Unabhängiges Vertriebsunternehmen
von elektronischen Bauteilen

ein Qualitäts- und Umweltmanagementsystem
eingeführt hat und anwendet.

Durch Audits, dokumentiert im Auditbericht (Bericht-Nr. 707057978),
wurde der Nachweis erbracht, dass diese Managementsysteme
die Forderungen folgender Normen erfüllen:

ISO 9001:2015
ISO 14001:2015

Dieses Zertifikat ist gültig vom 2016-03-22 bis 2019-03-21
Zertifikats-Nr.: 12 10Q/104 51692 TMS.

认证证书

标准 ISO 14001:2004 + Cor. 1:2009
证书登记号码 01 104 1532605

证书持有者:



CCI Asia
China
苏州欣奥盛贸易有限公司
中国江苏省苏州市苏州工业园区新平街
388号腾飞科技园23幢06层10室
邮编: 215214

认证范围:

电子元器件的销售

证明完成了审核并满足了 ISO 14001:2004 + Cor. 1:2009 标准的要求。

有效期:

证书有效期从 2016.07.24 至 2018.09.14

Certificate

Standard ISO 14001:2004 + Cor. 1:2009
Certificate Registr. No. 01 104 1532605

Certificate Holder:



CCI Asia
China
Commodity Components International Suzhou Ltd.
Room 10, Floor 6th, Building No. 23rd,
Ascendee Hub, No. 388, Xingping Street, SIP,
Suzhou, Jiangsu Province 215124, P. R. China

Scope:

Sales of Electronic Components

Proof has been furnished by means of an audit that the
requirements of ISO 14001:2004 + Cor. 1:2009 are met.

Certificate is valid from 2016-07-24 until 2018-09-14

CCI EUROPE | CCI ASIA CERTIFICATES

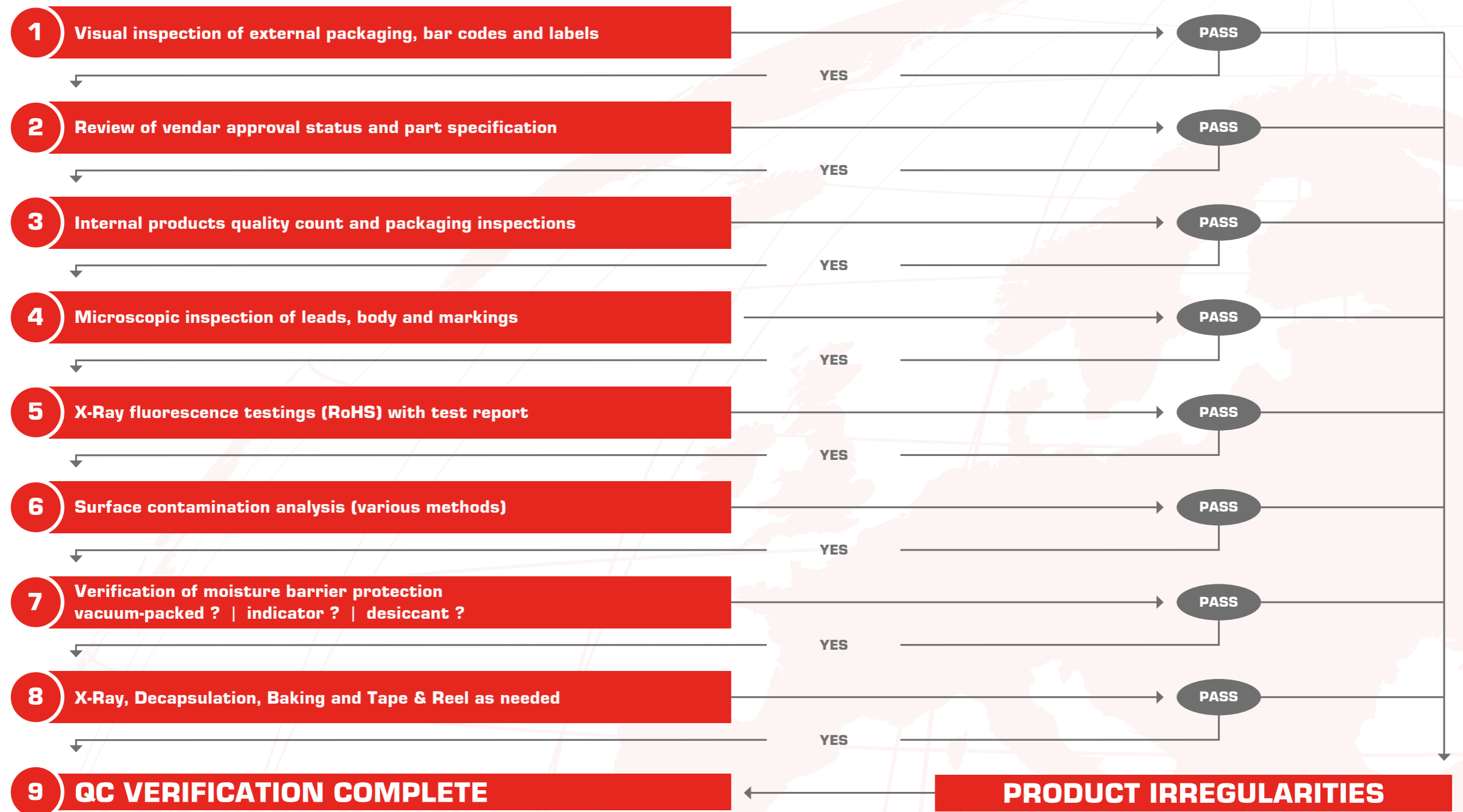
original - current - complete

- ✓ **ISO 9001:2015**
Quality management
- ✓ **ISO 14001:2015**
Environmental management
- ✓ **ESD DIN EN 61340-5-1:2008**
ESD storage capabilities
- ✓ **ERAI MEMBERSHIP**
Our good name in the industry



INSPECTION PROCESS

Industry standard





CCI LAB

High tech equipment for dependable results!

✓ **HIROX HIGH RESOLUTION MICROSCOPE**

Visual examination with photo documentation

✓ **DYNASOLVE 750**

Chemical surface analysis

✓ **XRF - ELEMENT ANALYSIS**

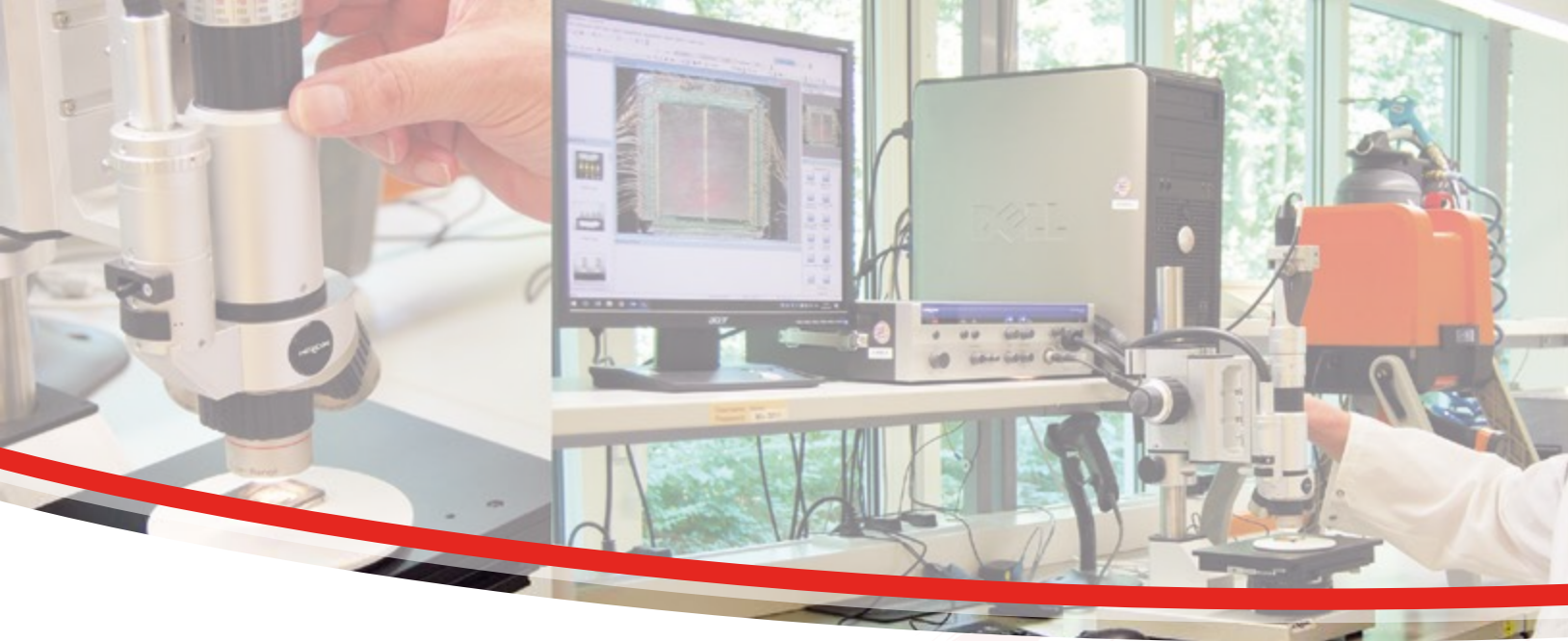
Analysis of metal elements in electronic parts with documentation, RoHS!?

✓ **NISENE DECAPSULATION**

DIE-inspection through chemical decapsulation

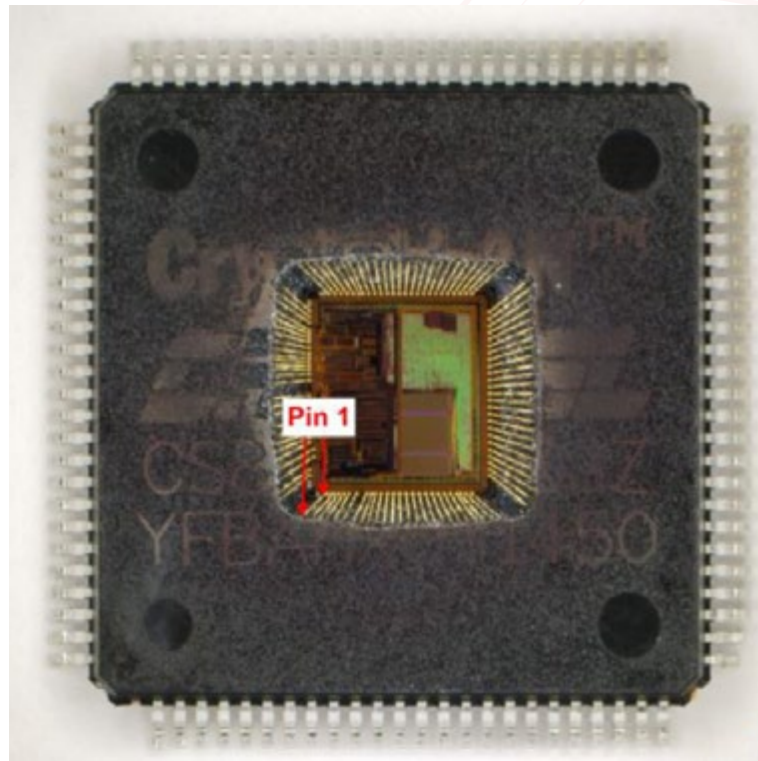
✓ **GLENBROOK**

DIE X-Ray inspection with reel to reel
DIE comparison



HIROX HIGH RESOLUTION MICROSCOPE

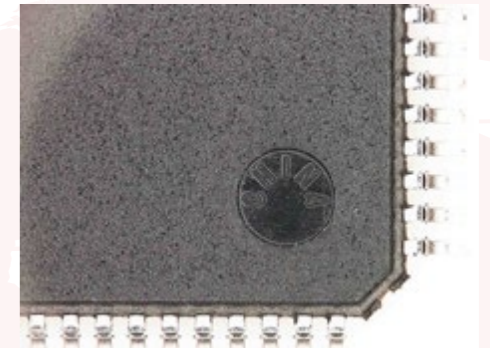
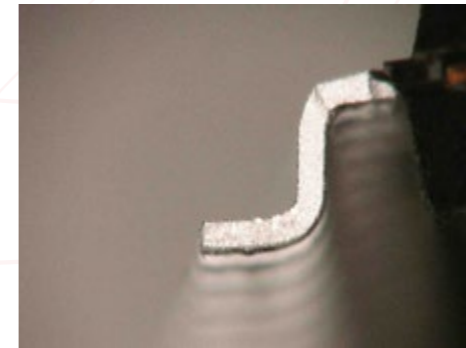
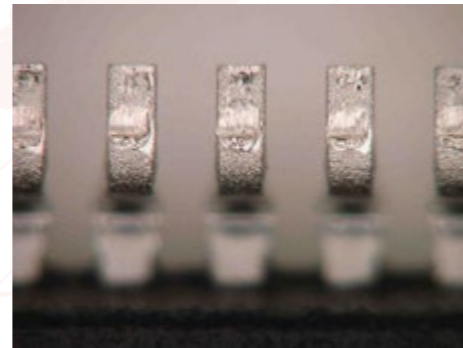
Visual examination with photo documentation



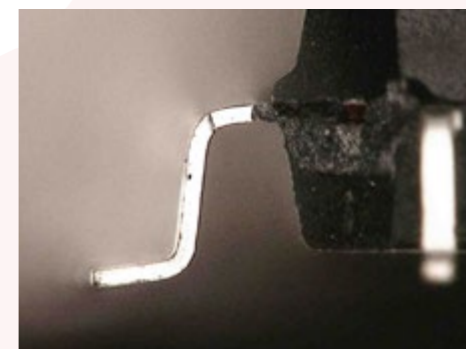
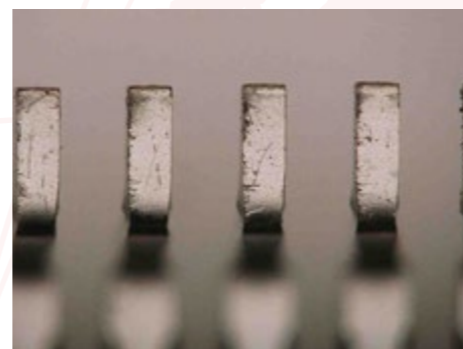
HIROX HIGH RESOLUTION MICROSCOPE

Visual examination with photo documentation

Original



Fake





DYNASOLVE 750

Chemical surface analysis



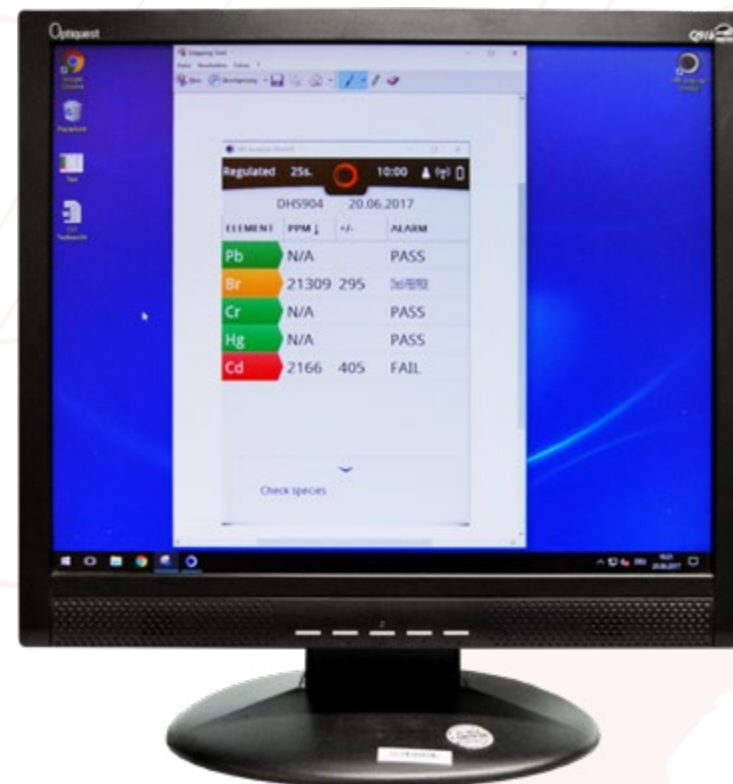


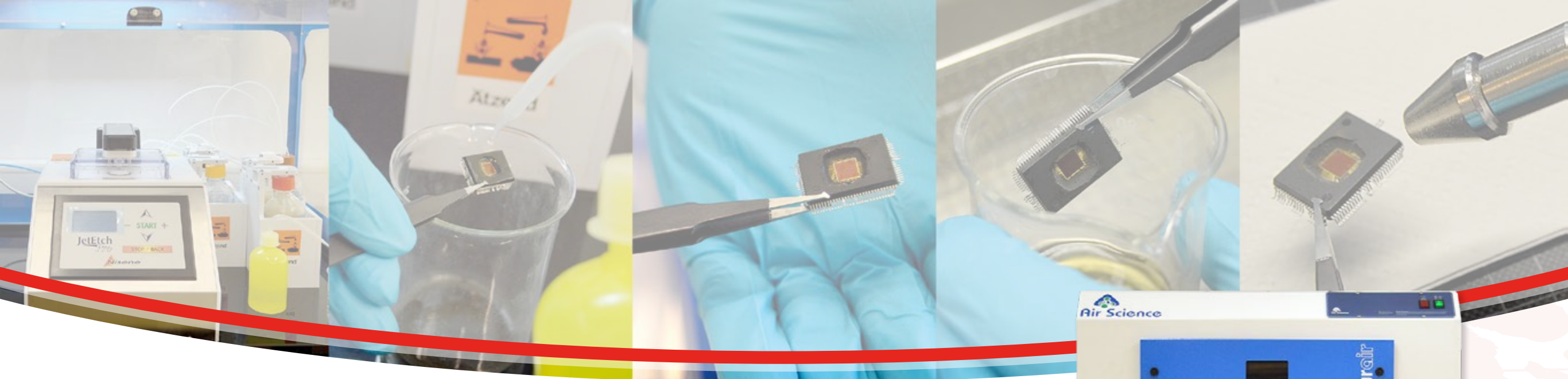
XRF - ELEMENT ANALYSIS

Analysis of metal elements in electronic parts with documentation, RoHS!?

ELEMENT	PPM ↓	+/-	ALARM
Pb	N/A		PASS
Br	N/A		PASS
Cr	N/A		PASS
Hg	N/A		PASS
Cd	N/A		PASS

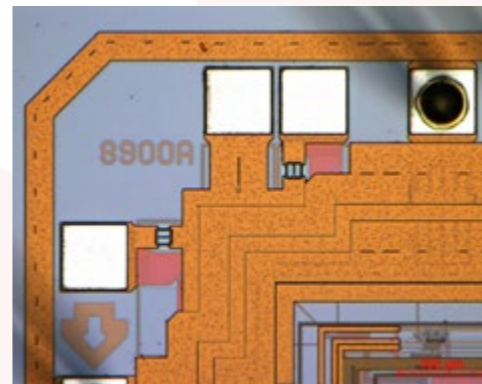
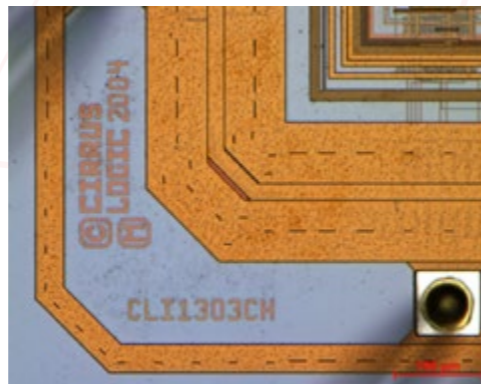
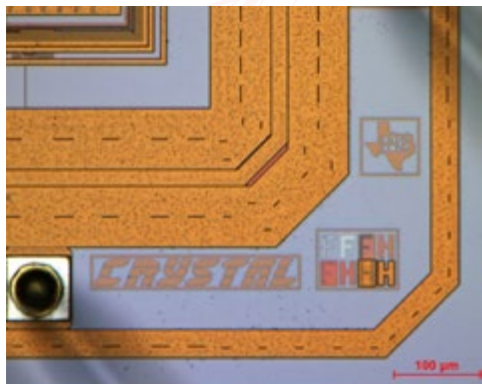
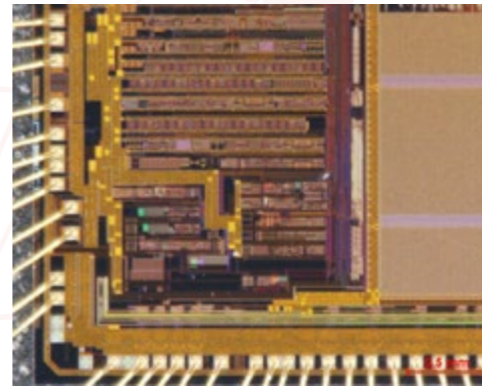
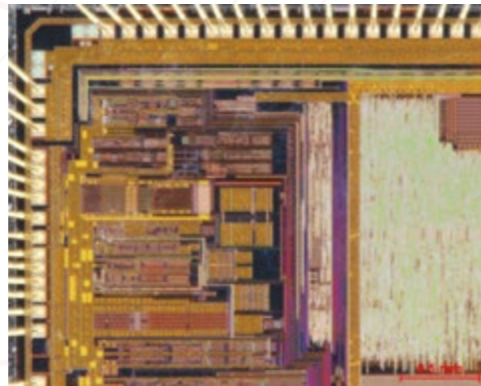
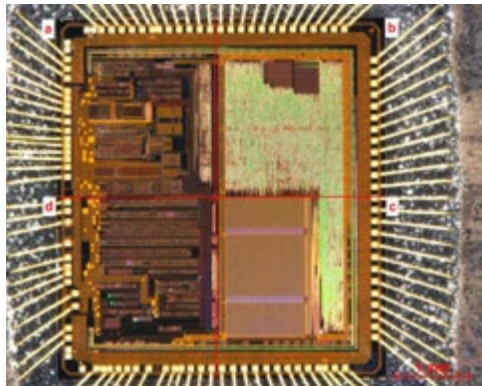
COMPLIANT

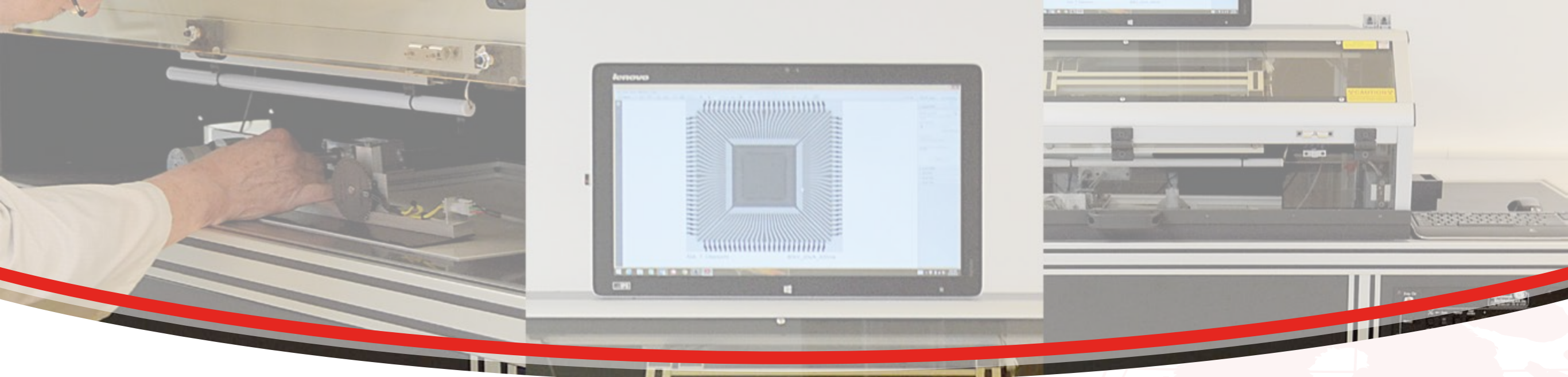




NISENE DECAPSULATION

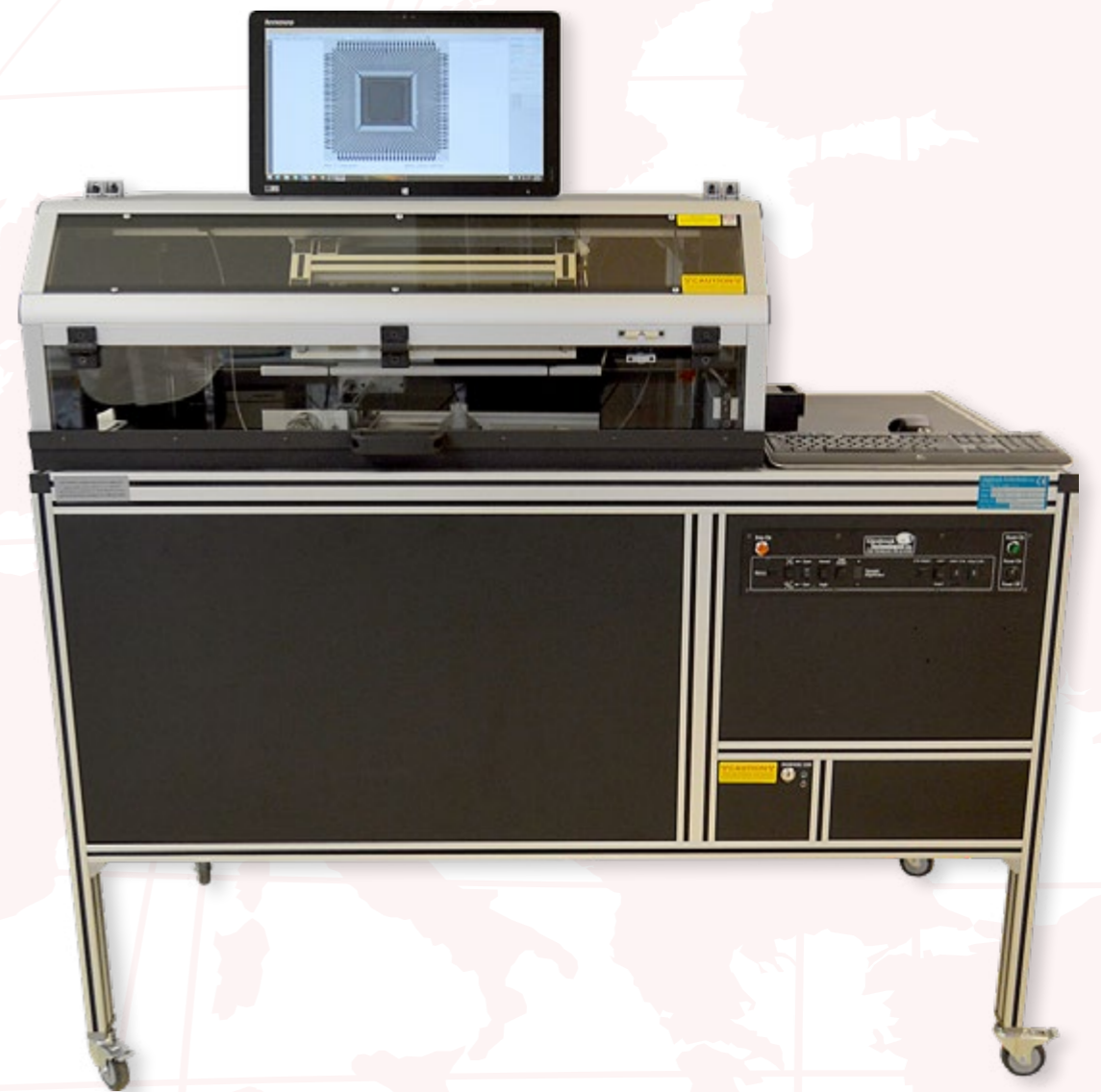
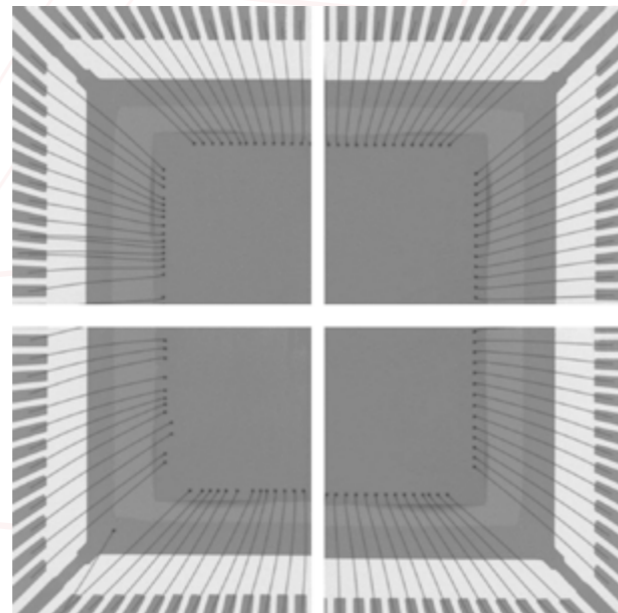
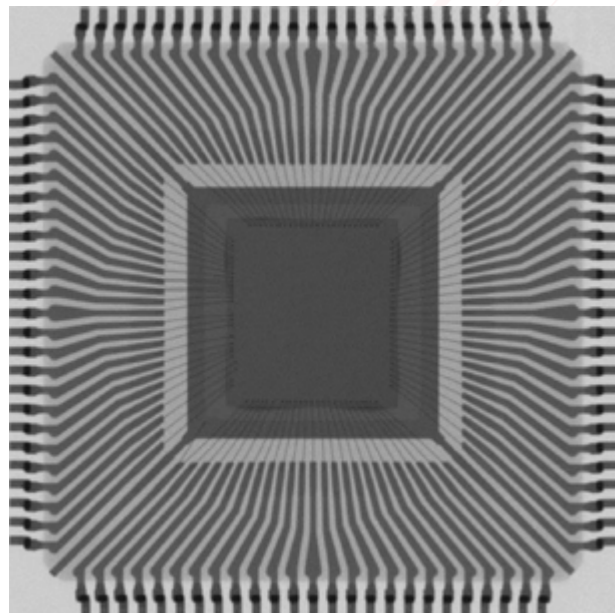
DIE-inspection through chemical decapsulation





GLENBROOK

DIE X-Ray inspection with reel to reel DIE comparison



TEAM CCI ASIA



William Xi
Managing Director



Johnson Gu
Process Leader



Alina Gao
Senior Sales
Manager



Amy Lau
AR/AP



Sarah Qiao
Procurement



Sunny Wang
Sales Rep



Tommy Yang
Sales Rep



Bruce Li
Warehouse
& Quality



WH Pun Wing Kong
Process & Quality

TEAM CCI EUROPE



T. Schwanbeck
Managing Director



R. Wagenschieber
Managing Director



B. Wagenschieber
Accounting



C. Bauer
Purchase



S. Pavlovic
Processing



A. Barg
Processing &
ISO-Representative



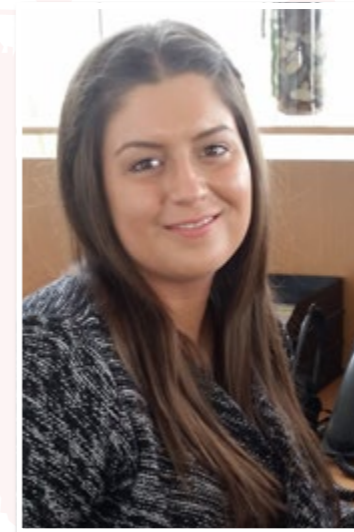
E. Wüstenbecker
Processing
& Distribution



W. Pander
Expediting
Goods receipt/issue



A. Lazic
Storeman
Goods receipt/issue



P. Yumusak
Apprentice



L. Giebel
Apprentice



THANKS FOR YOUR ATTENTION!

RESPONSIBLE · HONEST · DEPENDABLE



Bad Meinberger Straße 1
32760 Detmold
Germany

Phone: +49 (0) 52 31 | 98 10 10
Fax: +49 (0) 52 31 | 98 10 133

info@cci-europe.de

SuZhou Limited
Room 610, C-Tower Building
Ascendas i-hub Technology Park
SIP SuZhou 215028
China

Phone: +86 512 | 6280 0686
Mobile: +86 159 | 5005 8968

wxi@cci-inc.com.cn

www.cci-europe.de

EUROPE | ASIA | AMERICA